

The Circular

The Newsletter of Faithful Circle Quilters

April 2015

FCQ Officers

**Interim
President**
Nancy Meier

Treasurer
Janette Tarr

**Assistant
Treasurer**
Michelle Tarr

Thursday
Vice President
Mary Beth Little
Secretary
Sandy Reading

Monday
Vice President
Amy May
Secretary
Rose Panczenko

EDITOR'S NOTE

Carolyn sent me the following note in early March. She asked me to hold on to it until it was needed. It is her final note to us and reminds us of her courage and caring.

PRESIDENT'S MESSAGE

From Carolyn May

I just want to say it's been a privilege to have served as your president the last two years. I'm especially thankful for the support, the understanding, and how very supportive the Board has been when I couldn't possibly carry on for a while. And the close friendships I have made. I've met so many talented creative people in the guild and I've become so thankful to appreciate not only their personalities, but also their incredible stories--good and bad.

As you know, my story has revolved around cancer. Cancer (as well as other equally hard challenges) has struck many of us this past couple of years and I feel that as a community we've been stronger for it. I urge you to continue the special friendships and caring relationships that we find through our guild. You never know what a word means when said at the right time. Keep up Faithful Circle principles and remember all the fun we've had (and will continue to have). I shall miss you all. Keep quilting!

www.photobucket.com/albums/w517/FCQuilters

UPCOMING ELECTIONS FOR FAITHFUL CIRCLE BOARD MEMBERS

As required per our bylaws, the Nominating Committee is presenting the proposed slate of officers for 2015-2016.

- President - Nancy Meier
- Night Vice President- Amy May
- Day Vice President - Mary Beth Little
- Day Secretary - Sandy Redding
- Night Secretary - Linda Kerrick
- Primary Treasurer - Geri Flester
- Secondary Treasurer - Nancy Evans

If you are considering filling a board position, open nominations will be accepted from the floor on Monday April 20 and Thursday April 23. Voting for board members will occur on Monday May 18 and Thursday May 21. The installation of officers ceremony is Monday June 1st and Thursday June 4th at the parties.

EDUCATION

From Maria O'Haver

BONNIE HUNTER COMES TO FCQ

Bonnie Hunter will present a lecture on Thursday April 9 starting at 10 am. Please note the prompt start time that is a bit earlier than we typically start lectures. The lecture is open only to members due to space constraints. Plan to arrive a bit early for the meeting to settle in and be ready for the lecture start. Bonnie is teaching a class directly after the meeting/lecture, so we will be ending the meeting at noon.

SAVE THESE DATES:

- Thurs, Apr 9 Bonnie Hunter Lecture 10 am - 12 Noon
- Oct, 2-4 Fall Retreat
- Mon, Nov 9 Diane Rusin Doran Lecture 7pm

SPRING QUILT RETREAT

From Paula Henry

We've had a few cancellations, so if you are interested in attending, there's still room. This year's quilt retreat is at the Riverview Retreat Center at Camp Pecometh in Centreville, MD, June 5-7. Housing is hotel-style and this year six meals will be provided beginning with lunch on Friday and ending with a mid-

morning brunch on Sunday. The sewing rooms will be available for our use from Friday at 10 am until 4 pm on Sunday. The cost for the retreat is \$230 per person for double occupancy and \$355 for single occupancy. The balance for the retreat is due to Paula by May 1. To reserve your spot, contact Paula Henry by phone, email, or snail mail.

FALL RETREAT AND CLASS WITH MARGE TUCKER

From Maria O'Haver

We will be holding an educational event at the Fall retreat this year on October 2 - 4, 2015. The retreat will be at the Riverview Retreat Center at Camp Pecometh in Centreville, MD. Housing is hotel style, double occupancy with two rooms available for single occupancy. There will be six meals included, beginning with dinner on Friday and ending with lunch on Sunday. Arrival will be mid-morning on Friday (bring a bag lunch). Class will be held Friday 1-5pm, Saturday 9-4pm and Sunday 9-3pm. The sewing room will be available for use from Friday at 10am until Sunday at 4pm. The cost of this educational retreat will be \$291 double occupancy or \$418 single occupancy. There will be a limit of 20 students at the retreat.

Marge Tucker will be our instructor. Marge, who was recommended to us by Gwen Marsten, will be taking over teaching of Gwen's "liberated quilt making" techniques since Gwen is retiring soon. At our retreat, Marge will be teaching the class "Small Studies". This class is built on the idea of exploring abstract design by making small studies or sketches. Just as painters use sketches to explore possibilities, fabric sketches are for working things out; for learning new techniques, exploring color and composition. They are your ticket to play, and to develop your own aesthetics in a safe, worry free space. Making sketches is like taking a crash course in design.

Registration is now open for the Fall Education Retreat. A deposit of \$50 is required to sign up. Contact Maria O'Haver to sign up. Please indicate single or double room preference, and name of roommate if you have a friend you'd like to room with.

2014-2015 ROUND ROBIN CHALLENGE

From Janette Tarr

Well, the weather has been raising havoc with our schedule, and church's closings for Easter week were not taken into account. As a result our next exchange dates have slipped by a week. That gives participants an extra week to work on the second outer border. The requirements for this round require that the border be least 2" wide; it must include at least 3 different fabrics (the focus fabric is optional); and it must incorporate some curves or circles. The round exchange will take place Thursday, April 9th or Monday, April 13th. After this exchange, we will be working on the *final* round! This round will add a third border that is at least 3" in width. It must include at least 3 different fabrics (including the focus fabric). This border must incorporate some square or rectangular elements. The final pieces are due and will be shown to all other members on Thursday, May 7th or Monday, May 11. If you have problems with either the assembly or the due dates, please contact Janette Tarr, jmtarr79@gmail.com or 410-465-5038, so that we can make other arrangements.

CRAFT/QUILT SUPPLIES YARD SALE

From Maria O'Haver

Members are invited to participate in the Yard Sale of craft related items that we will be holding during the meetings Monday April 27 and Thursday April 30. Items can be fabric, partially completed items or supplies related to quilting or any other craft. If you would like to reserve a table to sell your craft related items, or have any questions, please contact Maria O'Haver. There is no cost for "renting" a table. Each person is responsible for their own financial transactions.

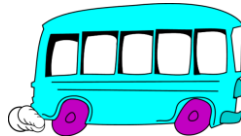
PRISON QUILT SHOW

From Sandy McDonald

On behalf of Inge Stocklin, Gayle Sternheim, Virginia Fry, and Nancy Meier, we would like to invite the members of Faithful Circle to the upcoming quilt show being held at the Patuxent Institute for Women in Jessup, MD. The members of Faithful Circle have been very generous over the years to this worthwhile project. The show is tentatively scheduled for May 20. Due to updated nation-wide security requirements, all guests are now required to provide their: name, date of birth, social security number, and driver's license number. A background check will be completed for each guest in order to enter the facility. If you would like to attend the quilt show at Patuxent, please contact me (410-461-4337).

BUS TRIPS 2015

From Sandy Lynch



The bus trips for 2015 will all leave from the park and ride outside the church at 7:30 am and return by 7:30 pm. The price has increased to \$48 per person, which includes the bus driver's tip and entrance to the show, and for the shopping trip it includes lunch at Shady Maple Smorgasbord. Checks are payable to Milltown Quilters.

Our next trip is Friday September 18 to Oaks, PA for the Pennsylvania Quilt Extravaganza show. We need 40 people signed up and paid by Friday August 7 or the trip will be cancelled.

Our last and most popular one is the shopping trip on Friday October 16. We go to Souder's Fabrics, Shady Maple Smorgasbord for lunch and then to the Kitchen Kettle area where there are several more fabric stores.

We are taking signups for all of the trips now. You can see Sheri Thompson, Eleanor Howe or Sandy Lynch or give us a call to sign up or to ask questions.

YARN DONATIONS

From Georgia Morris

THANK YOU very much to all who have donated yarn for the knitters/crocheters at the Laurel Senior Center. They were delighted and very grateful to receive so many wonderful skeins. The kindness and generosity of FCQ members continues to amaze and humble me.

PROJECT LINUS

From Stephanie Sanidas



Thank you for the overwhelming donation of quilts for Project Linus' Tragedy Assistance Program for Survivors (TAPS). So far, FCQ has donated 15 quilts for the 2015 Memorial Day weekend camp to be held in Washington DC. You can continue your efforts by giving donation quilts to Stephanie Sanidas by May 1st. Quilts received after the May 1st deadline will be stored and saved for the TAPS 2016 camp.

KOMEN RAFFLE QUILT

From Stephanie Sanidas

FCQ is donating 5 spectacular quilts and 1 snuggly pink shawl to the Komen quilt raffle on April 19, 2015 in Ocean City, MD. We all know family members, friends, and guild members affected by breast cancer. Think about what you can do to help find a cure and support our loved ones. The next Komen race and quilt raffle is October 2015 raffle in Hunt Valley.

RAFFLE QUILT 2016

From Margo Cramer, Raffle Quilt Chair

Many thanks to the team of volunteers who showed up at the Raffle Quilt Sew-In on Wednesday, March 25th. Debbie Caster, Marianne Hendrickse, Paula Henry, Susan Mann and Janette Tarr showed up with their sewing machines and Sheva Farkas pinned strips together. In just over 3 hours these 6 volunteers completed all the kits that I had brought and connected a goodly number of them to construct the borders of the quilt. Thank you all again for your efforts. Also, our thanks go to Peg McClelland for allowing us to share the space with Caring Hands. Her generosity allowed us to have the Sew-In a month sooner than the church could accommodate us on a Saturday.



FRIENDSHIP AND HEART BLOCKS

FOR ROSE PANCZENKO

Rose has requested batik hearts on cream background. For an example, see the heart pattern on the FCQ website. The unfinished size for the web site block is 7-inches. Blocks will be finished at 6 1/2". Send your blocks to Rose with a card to wish her well.

FOR MITSN MITCHELL

Mitsn is recovering from a bilateral mastectomy and has just completed four sessions of chemo. She is currently recovering at home and has requested red hearts on a cream background. See the website for the pattern. Send your blocks to Mitsn.

NEWS OF INTEREST

MILLTOWN QUILT SHOW

When: April 16-18

Where: First Presbyterian Church of Howard County

Hours: April 16 and 17 - 10 a.m. to 6 p.m.; April 18 - 10 a.m. to 4 p.m.

For more information go to www.milltownquilters.com

FROM SHEILA REISS

I am thrilled to say my wall quilt "April Journey" (Sacajawea) won Best Use of Color at the Mid Atlantic Quilt Festival. My wall quilt "Trouble Will Find Me" has been accepted into the 2015 AQS Paducah show, April 22-25. My wall quilt "Open All Night" has been accepted into the Destination: Savannah show March 26-29.

FRIENDSHIP STAR QUILT SHOW

When: April 24-26

Where: Montgomery County Fairgrounds, Home Arts Building, Gaithersburg, Maryland

Hours: April 24 and 25 - 10 a.m. to 6 p.m.; April 26 10 a.m. to 4 p.m.

Cost: Adults - \$10, Seniors - \$8

For further information go to www.friendshipstar.org

NATIONAL QUILT ASSOCIATION 46TH ANNUAL QUILT SHOW

Calling all Quilters: NQA is excited to announce that quilt entrants have a chance to win cash awards at the 2015 Annual NQA Quilt Show-\$500 for Best in Show, \$250 for Special Award, and \$100 for first place in each category! Display your creativeness by entering the 46th Annual NQA Quilt Show and remember, quilt entry is open to everyone, you do not need to be a NQA member. Visit the Quilt Show 2015 [Quilt Entries](#) page to enter your quilt!

BLOCK OF THE QUARTER - GO WILD!

From Sharon Roton



From barnyard friends to the biggest of big game, from below the waves to above us in the sky, animals are this quarter's theme. Make a quilt block depicting any animal, or use animal-themed fabric in any block pattern. Any colors, patterns, or techniques can be used. Blocks should be 9" finished (9-1/2" unfinished). These blocks will be drawn at the June party on Monday, June 1st. Let your wild side show!

BLOCK OF THE MONTH - April 2015
Hopping through the Bunny Patch from April 1994
From Pat Wyatt

Continuing with our blocks from days gone by, April's block is inspired by "Hopping through the Bunny Patch" from April 1994. It was submitted by Helen Myers. I've updated it a bit for ease in piecing. The block is comprised of two 6 1/2" nine patch squares and two 6 1/2 inch spring motif focus fabric squares for a four square block. Helen used bunnies for her focus squares. I suggest using spring colors and spring motifs for the focus fabric.

Congratulations to Paula Henry who won the draw for the "Split Nine Patch" BOM for December, January and February!!

Note: I also still have the Black and White and a bit of bright blocks of the quarter won by Karen Hammond.

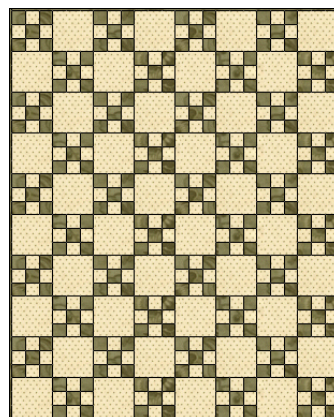


Cut five 2 1/2 inch squares of spring fabric A and four 2 1/2 inch squares of spring fabric B for one nine patch block. Repeat to make two nine patch blocks. Cut two 6 1/2 inch squares of the spring motif focus fabric.



Lay out the squares for the nine patches as shown at left. Using a scant 1/4" seam allowance, sew three horizontal rows of squares. Join the rows. Alternate the placement of one nine patch with a focus square to create a four square block.

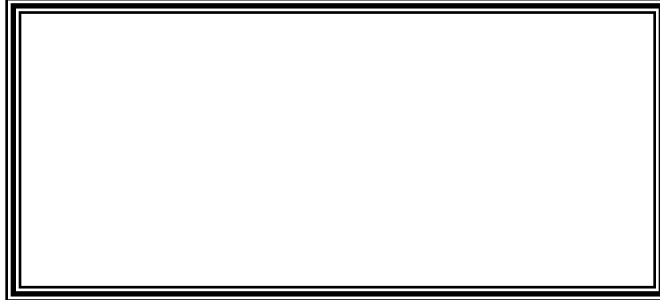
Here's a picture of a completed quilt using the nine patch alternating with the focus squares. (The pictures are from www.quilterscache.com and can be used by quilt guilds for BOM purposes.)



Faithful Circle Quilters
Janet O'Leary, Editor
P. O. Box 6231
Columbia, MD 21045

Email: newsletter@faithfulcirclequilters.com

/// Faithful Circle Quilters
/// welcomes anyone
/// interested in quilts and
/// quilting.
///
/// We meet on Monday
/// evenings
/// from 7 to 9 pm
/// AND
///
/// Thursday mornings
/// from
/// 10 am to 2 pm
/// At the
/// First Presbyterian
/// Church on
/// Rt. 108 at Rt. 29
/// Columbia, MD
///
/// Please come join us and
/// visit our web site at
/// www.faithfulcirclequilters.com
///



Betty Kilroy April Birthday Party

- 03 Michelle Tarr
- 05 Genie Corbin
- 06 Anna H. Norton
- 13 Susan Mann
- 14 George Hubble
- 14 Beth Cooper
- 15 Gayle Sternheim
- 16 Margaret Ward
- 17 Helene Ross
- 17 Joanne Brazinski
- 19 Patricia Neal
- 19 Kathy Lee
- 22 Roberta Yaklich
- 25 Leigh Eirich
- 27 Ujjwala Powers
- 27 Patty Wheeler
- 28 JoAnn Adkins

CALENDAR

- Apr 1** - Komen raffle quilts due
- Apr 9** - Bonnie Hunter lecture
- Apr 9 & 10** - Bonnie Hunter classes
- Apr 9 & 13** - Round Robin due
- Apr 13** - Love Quilts
- Apr 20 & 23** - Board Nominations
- Apr 22** - Caring Hands
- Apr 27 & 30** - Yard Sale
- May 1** - TAPS quilts due
- May 7 & 11** - Final Round Robin due
- May 18 & 21** - Vote for Board
- May 13 & 27** - Caring Hands