

# The Circular

## FCQ Officers

### President

Carol Petranek

### Treasurer

Kathy Lee

### Assistant

### Treasurer

Janet O'Leary

### Thursday

### Vice President

Carol Roberts

### Secretary

Debbie Jensen

### Monday

### Vice President

Amanda Bush

### Secretary

Barbara Bennett

## PRESIDENT'S MESSAGE

*From Carol Petranek*

Thanksgiving is almost here! It is the all-encompassing American holiday. Our country is unlike any other; we abound in a land of plenty, with opportunities for all within. As such, we join in unity and appreciation for our citizenship and our blessings. This month is recognized as a time to pause in reflection and gratitude. It is also a time to reach out with compassion to others.

I love that our guild is focused on benevolent and charitable causes. With our hands, we create for the heart. Love quilts and Linus projects wrap sick and injured recipients in warmth and love. Our "sister group," Caring Hands, provides practical, needed and lovely items which are donated to local organizations. FCQ is making a difference in our community.

Thank you for joining your hands with ours and participating in compassionate service projects. Wishing you and your family/friends a joyful and meaningful Thanksgiving.



[www.photobucket.com/albums/w517/FCQuilters](http://www.photobucket.com/albums/w517/FCQuilters)

## FCQ WELCOMES BECKY GOLDSMITH

*From Maria O'Haver*

We are pleased to announce our final guest lecturer and teacher for 2018, Becky Goldsmith. Becky is part of the "Piece O' Cake Designs" team of well-known pattern designers, authors, educators and quilt artists. She will be presenting her lecture "A Practical Approach to Color" on Thursday November 8 at 10:30am at the guild meeting. Becky will be teaching three workshops.

**Thursday Nov. 8 - Texas Tulip Wool Applique** - This half day workshop will be held from 1-4pm in Lyle Buck Hall. Learn the basic techniques of wool applique as you work on the 12" x 12" Texas Tulips center medallion block. The 3-hour class focuses on fusing, the blanket stitch, and outer points. All skill levels welcome. The pattern for the small quilt is provided in class. Cost \$25 (\$20 for multi class registration).



**Friday Nov. 9 - Button Box** - This full day workshop will be held from 9:30-4pm in Lyle Buck Hall. Don't be afraid! Curved seams and set-in circles are truly simple — and fun — to sew. You will master curved seams in this machine piecing class. All skill levels welcome. The pattern (from *Piecing The Piece O' Cake Way*, 2nd ed) is provided in class. Cost \$50 ( \$40 for 2-class registration or \$38 for 3-class registration)

**Saturday Nov. 10 - Improvisational Piecing** - This full day workshop will be held from 9:30-4pm at the Gary J. Arthur Community Center. Learn how to make decisions and embrace the unexpected as you work on your very own quilt that will be like no one else's. This class focuses on color and design. You can cut with or without a ruler. All sewing is done on the machine. You can use my quilt as inspiration or come with an idea of your own. In either case, you will find that your quilt will take shape as you cut and sew.



All skill levels are welcome. Cost is \$50 per class, \$40 for 2-class registration, and \$38 for 3-class registration.

## MONTHLY DEMOS

*From Carol Roberts*

The 4th Thursday has been designated as "Demo Thursday." The demos will begin around 11:00am and last for 15 to 20 minutes. Since Thanksgiving falls on the 4th Thursday, we will have the demo on the 5th Thursday, November 29th. MARIA O'HAVER will be demonstrating chain piecing Y seams.

CAROL PETRANEK'S November demo featured Peg Spradlin's "Fold and Sew" technique. This is a link to the video on YouTube, which shows exactly how to use this easy technique. You can chain piece the folded seams which makes the project go super quickly! <https://youtu.be/cgV64kXet7s>

---

## QUILT CHAIRS

*From Sheva Farkas*

It's almost time for our show again... The 2020 quilt show chairs are looking for a few good people interested in being a part of the work for our guild's hugely popular bi-annual quilt show. If you are interested, *now* is the time to volunteer. There are openings for chair and co-chair positions. Fun will be had by all. Please contact SHEVA FARKAS, NORA GOLDSTEIN or BECKY HASSELL for more information. No one does this alone - we need *your* help!

---

## SILENT AUCTION

*From Elaine Bishop*

The members of Faithful Circle Quilters are the greatest people! Thank you so much to everyone who participated in ways big and small for making the Silent Auction a successful event again this year. The variety of items is always intriguing, sometimes the bidding gets pretty active, and the raffle ticket sales went well. This year we brought in \$2,043.00 in sales and donations. In addition, the guild is donating \$500, bringing the total gift to First Presbyterian Church of Howard County to more than \$2,500. We will be presenting our check to the deacons in charge of the Thanksgiving 'basket' project within the next couple of weeks.

---

## TEE SHIRTS

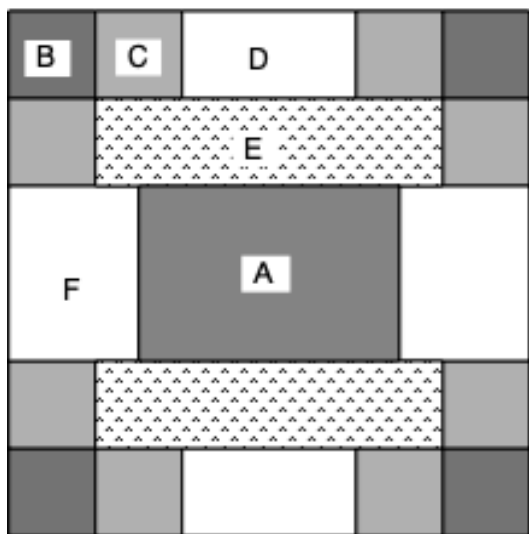
*From Georgia Morris*

It's that time of year again!! Howard County Hospital's Emergency Room has an urgent need for plain **white** undershirts (tee shirts) for children and adults who arrive with ruined/soiled shirts. I will be collecting these undershirts at the November meetings through the Holiday Luncheon in December. Shirts must be new and still in the package. The hospital needs children's tees in medium, large, and extra-large sizes, and adult tees in small, medium, and large sizes. They can be found in most department stores, and even some craft stores. Early shopping reports the lowest prices at WalMart. As always, thank you for your generosity.

# BLOCK OF THE MONTH FOR NOVEMBER

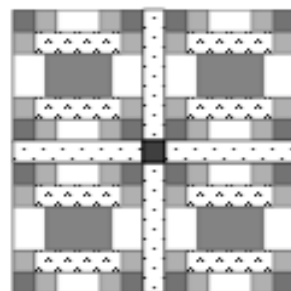
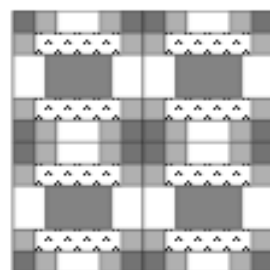
From Linda Schiffer

## Spools and Flowers 12" finished block



This is a good block for an 'I Spy' style quilt design. Easy to sew, it has a pretty secondary design when set block-by-block.

For the block of the month drawing, please use a novelty print with an 'Autumn' theme for the central rectangle (the 'thread' in the spool). Use bright flower colors for the corner figures and a white or white-on-white print for the 'background'.



### Cutting directions:

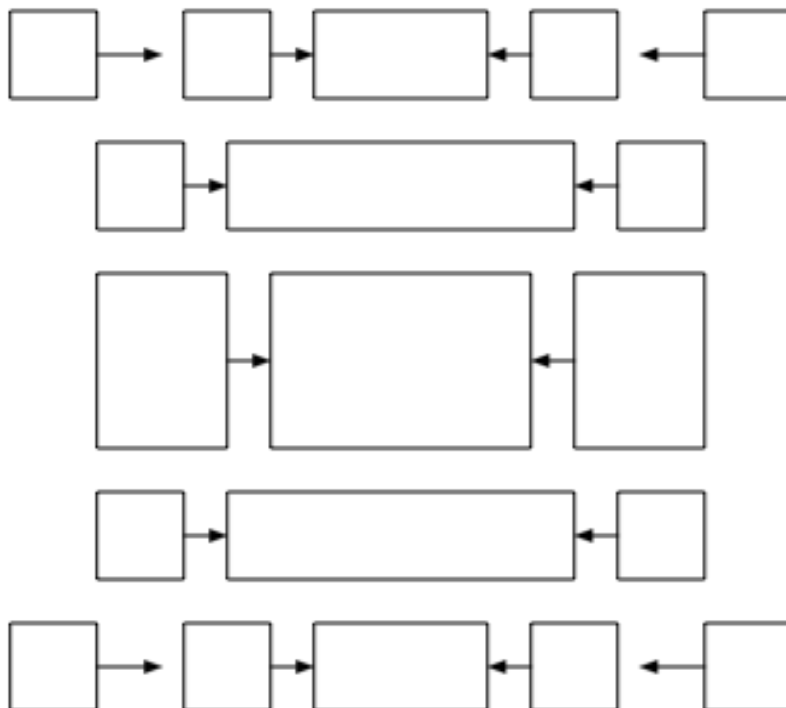
4.5" x 6.5" novelty print with Autumn theme for center rectangle A

Two 2.5" x 4.5" and two 3.5" x 4.5" white or white-on-white rectangles for background, D & F

Two 2.5" x 8.5" rectangles for spool ends, E

Eight 2.5" squares for flower petals, C

Four 2.5" squares for flower centers, B



Assemble as shown above

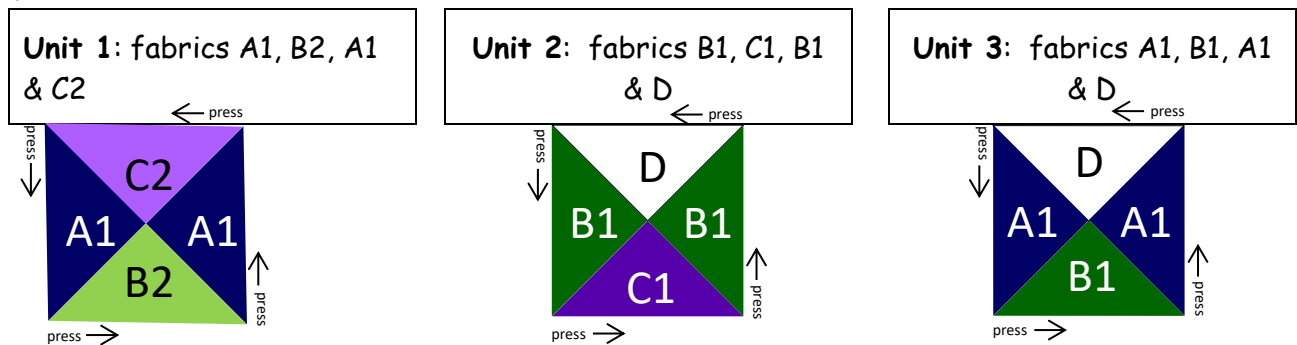
## MYSTERY CHALLENGE

From Janette Tarr and Michelle Tarr

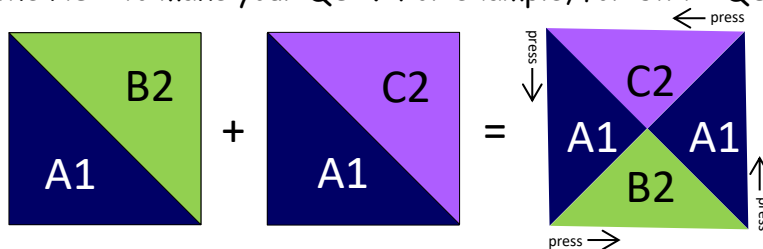
Step 3: Quarter Square Triangles (QST) are made from two half-square triangles (HST). **We will use the untrimmed HST made earlier.** I will demonstrate the making of QST on the first Monday meeting and first Thursday meeting in November (11/5 and 11/1, respectively). The number of HST you will need for this step is based on the size of your quilt. **YOU SHOULD HAVE SEVERAL REMAINING UNTRIMMED HST THAT ARE NOT USED IN THESE QST.**

	small	lap	twin	full	queen	king
Size	33" x 33"	51" x 51"	51" x 69"	69" x 69"	69" x 87"	87" x 87"
A1/D HST	4	6	7	8	9	10
B1/D HST	12	30	41	56	71	90
B1/C1 HST	12	30	41	56	71	90
A1/B1 HST	4	6	7	8	9	10
A1/C2 HST	2	6	9	12	16	20
A1/B2 HST	2	6	9	12	16	20

Our QST will be made with three different fabrics combinations:



You have to pair the HST to make your QST. For example, for Unit 1 QST:



Trim each QST to 3.5" square, unfinished (3" square, finished). The number of QST needed is dependent on the size of quilt you are making.

	small	lap	twin	full	queen	king
Size	33" x 33"	51" x 51"	51" x 69"	69" x 69"	69" x 87"	87" x 87"
<b>Unit 1</b>	4	12	17	24	31	40
<b>Unit 2</b>	24	60	82	112	142	180
<b>Unit 3</b>	8	12	14	16	18	20

If you have any questions, just let us know! (Janette: [jmtarr79@gmail.com](mailto:jmtarr79@gmail.com) // 410-465-5038) or (Michelle: [metarr9@gmail.com](mailto:metarr9@gmail.com) // 410-868-1711).

Faithful Circle Quilters  
Lauren Swanger, Editor  
P. O. Box 6231  
Columbia, MD 21045

Email: [newsletter@faithfulcirclequilters.com](mailto:newsletter@faithfulcirclequilters.com)

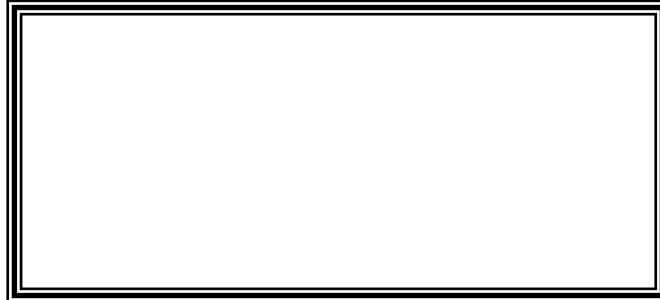
Faithful Circle Quilters  
welcomes anyone  
interested in quilts and  
quilting.

We meet Monday evenings  
from 7 to 9 pm  
AND

Thursday mornings  
from 10 am to 2 pm

At the  
First Presbyterian  
Church on  
Rt. 108 at Rt. 29  
Columbia, MD

Please come join us and  
visit our web site at  
[www.faithfulcirclequilters.com](http://www.faithfulcirclequilters.com)



## Betty Kilroy's November Birthday Party

03 Virginia Fry  
03 Patricia Ledda  
11 Mary McCahill  
12 Maggie Nebel  
14 Emily Wheeler  
23 Joan Fox  
23 Linda Schiffer  
24 Marcia Halcomb  
24 Janette Tarr

## CALENDAR

Thurs. Nov. 8 ..... Becky Goldsmith  
Lecture  
Texas Tulip Class  
Fri. Nov. 9 ..... Button Box Class  
Sat. Nov. 10 ..... Improvisational  
Piecing Class  
Sat. Nov. 10 ..... Board Meeting  
9:00am